

## 2025 Workshop Registration opens

### February 26th!

Get ready for a new and improved version of our popular workshops! We are pleased to offer multiple exciting workshops throughout 2025 featuring talent from our long-term resident artists as well as artists from afar. Registration opens on February 26th at 10:30 am MST on our [website](#)! Check out the options below!

### Ceramic Furniture with Long Term Resident Artist and 2025 NCECA Emerging Artist Austin Coudriet! May 15-19, 2025 at The Bray



Join us at The Bray for an immersive five-day workshop and create your very own piece of ceramic furniture. Explore advanced coil and slab-building techniques, focusing on moisture control and effective attachment methods, learn when and how to incorporate internal supports, and gain practical experience in: enclosing forms, constructing shrink slabs, managing the drying process, and more.

Intermediate to Advanced Experience Level

[Registration Opens February 26, 10:30 am MST on our website.](#)

**Working with Local Clay with Long Term Resident Artist Dante Gambardella, plus Josh DeWeese, and**

## HOURS

### Clay Business

Monday-Friday, 10 am–5 pm  
Saturday, 9 am–5 pm

### Gallery & Visitor Center, Exhibitions & Artist Studios

Tuesday-Friday, 11 am–5 pm  
Saturday, 12 pm–4 pm  
Closed Sunday and Monday

### Bray Gallery: Downtown

Wed-Fri, 11 am–5 pm  
Saturday, 12 pm–4 pm

## UPCOMING EVENTS

### Speaking of Pots with Sarah Jaeger

**Sunday, Feb 23, 2-3 pm**

Organized and run by Sarah, Speaking of Pots is free and open to the public. Meeting from 2-3pm in the second floor lounge in the Frances Sensa Center for Education and Engagement, this conversation based series intends to increase knowledge and awareness of handmade pottery.

**DONATE TODAY**

## BRICKYARD PODCAST NETWORK

A wealth of ceramic conversation and knowledge right at your fingertips! Check out our most recent episodes

**Colby Allred**  
June 5-11, 2025 at The Bray



Don't miss your chance to learn from three talented artists coming together to lead a 7 day workshop on working with local clay. As a class you'll travel to local clay sites, dig clay, and learn to process the clay into a workable state fit for making and firing in both gas and electric firings. Gain confidence to dig your own clay and leave with a unique skill set to process clay with minimal resources and tools.

All levels welcome! (Beginner, Intermediate, Advanced)

[Registration Opens February 26, 10:30 am MST on our website.](#)

### **Glaze of Our Lives**

#### **Understanding Glazes for the Beginner with Matt Katz**

(One of three amazing hosts of our popular podcast, [For Flux Sake!](#))  
**July 21-25, 2025 at The Bray**

*Glaze of Our Lives* is a comprehensive study of ceramic glazes that helps people learn about what glazes are and how they work. In this 5 day in-person workshop we will answer all of the questions you have and smash a lot of the ceramic myths you may have been told. As a class, you'll take the mystery of materials, formulas and firings and translate them to change your studio forever!

All levels welcome! (Beginner, Intermediate, Advanced)

[Registration Opens February 26, 10:30 am MST on our website.](#)

Montana Educators – Receive OPI Renewal Units for Classes at The Bray!

on your favorite podcast app!



### **CLAY IN COLOR**



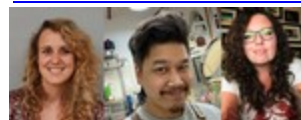
Angelik Vizcarrondo-Laboy and Alex Anderson talk with young professionals of color who use humor, cuteness, and the decorative in their work.

### **FOR FLUX SAKE**



Kathy King, Matt Katz and Rose Katz answer your burning questions about clay and glaze. You'll be laughing and learning about glaze chemistry in no time.

### **THE KILN SITTERS**



Marianne Chénard, Brendan Tang, and Carole Epp bring you enlightening interviews from Canadian makers.

### **MAKER'S PLAYBOOK**





## In the Light of Night Exhibition

The Bray Gallery: Downtown



Light your home with cozy ceramics that add warmth and charm. Discover candelabras, unique lamps, vibrant sculptures, mugs perfect for winter drinks, and more at the Light of Night exhibition at the Bray Gallery: Downtown, on display from February 6 to March 6, 2025.

## Welcome Visiting Artists Allie Stack and Gillan Doty!

Rebecca Ickes Carra talks with artists about what it's really like to make a living from the things we make.

### THE SHOT CALLERS



Each week Virgil Ortiz and Justin Reese will make a signature cocktail with their guests as they talk about their journey through the world of art.

### TALES OF A RED CLAY RAMBLER



Ben Carter talks with potters, sculptors, and ceramic designers about their creative practice.

### TRADE SECRET



Adam Chau hosts conversations about contemporary issues in art, craft and design.

### **Coming Soon! BEYOND THE BRICKYARD**

Take a deeper look at the history of the Archie Bray Foundation and its



Introducing our new Visiting Artists, Allie Stack and Gillan Doty!

At The Bray we are so proud of the ceramic community that we are part of. We strive to support our creative community in many ways, large and small. This ranges from making a donation to [CERF](#) to support artists affected by disasters to making space where we can for affected individuals. We are so pleased to welcome Allie Stack and Gillan Doty, potters from North Carolina who were severely affected by Hurricane Helene. They are here, working in the visiting artist studio, for two months to make new work and recharge. If you're in town, swing by the studio and say hello and keep an eye out here to see the fabulous work they create while here at The Bray.

Learn more about Allie Stack [HERE!](#)

Learn more about Gillan Doty [HERE!](#)

## Bray Clay Business



At [Bray Clay](#), we provide everything a ceramic artist, hobbyist, or classroom could need or want. We produce clays on-site in Helena, Montana for every firing temperature and color and we stock many

influence on the ceramic world. We are taking listener submitted questions for this podcast. If you have a story to tell shoot us an email and be on the show!  
([ben@archiebray.org](mailto:ben@archiebray.org))

## SPONSORS

Thanks to these sponsors for making the Brickyard Podcast Network possible. Contact [ben@archiebray.org](mailto:ben@archiebray.org) to join our growing list of sponsors.

The Rosenfield Collection  
Contemporary, Functional Ceramic Art Collection

**CERAMIC ARTS  
NETWORK**

**GR Pottery Forms**  
Durable and Economical

## QUICK LINKS

[Bray Homepage](#)

[Events Calendar](#)

[Education](#)

[Podcast Network](#)

[Become a Member](#)

[Donate Now](#)

[Online Sales Gallery](#)

[Clay Business](#)



more clays from Plainsman and Laguna. Everything you need to work with and finish your ceramic pieces—glazes, underglazes, tools, dry materials, and studio equipment—is all available in our Helena store, by phone, or [online](#).

---

## **We are thankful for you!**

Because of your generous support, we have been able to fuel our mission to promote, celebrate, and sustain the ceramic arts through the residency program, education, gallery, ceramic materials and technology, and community engagement on a local, national, and international scale. In the words of Archie himself, The Bray makes available, “for all who are seriously and sincerely interested in any of the branches of the ceramic arts, a fine place to work”.



Your love of the ceramic arts and our community makes this all possible. You are an important part of our work and our continued success. Please show your support by making a gift today.



---

*The Archie Bray Foundation recognizes and honors the Indigenous peoples of this region on whose ancestral lands the Foundation now stands. Indigenous people have inhabited the valley in which Helena is situated for more than 12,000 years; the valley acting as a crossover for Salish, Crow, Bannock, and Blackfoot tribes among others.*

*We respectfully acknowledge and honor all Indigenous communities whose land we reside on in what is now known as Montana— past, present, future—and are grateful for their ongoing and vibrant presence. We believe that acknowledging and reflecting upon the contemporary lived experience and history of the Indigenous peoples here in Montana and around the world are essential steps toward creating a more equitable world. Learn more through the [#HonorNativeLand](#) initiative of the U.S. Department of Arts and Culture, and consider contributing to Indigenous-led organizations doing important work to further the health and wellness, sovereignty and self-determination of the first peoples of this land.*

The Bray is a nonprofit educational organization dedicated to the enrichment of the ceramic arts, located at 2915 Country Club Ave. in Helena, just 1/3 mile west of Spring Meadow Lake.

The Bray is supported by the National Endowment for the Arts, and in part by the Montana Cultural Trust, the Montana Arts Council, the Bray Business Alliance and

the friends and members of the Bray. The Bray is funded in part by coal severance taxes paid based upon coal mined in Montana and deposited in Montana's Cultural and Aesthetic Projects Trust Fund.

**The Bray** | 2915 Country Club Ave, Helena, MT 59602 | 406/443-3502 | [www.archiebray.org](http://www.archiebray.org)