

NEWS from the BRICKYARD



Tickets available now for the Annual Bray Benefit Auction and Garden Party!!



Auction opens on July 10
Garden Party to celebrate on July 17
Don't miss our Annual Bray Benefit Auction! This year's auction will showcase a diverse collection of works from both past and current resident artists. Be sure to join us on July 17 from 6-10 pm for the Bray Garden Party, where we'll celebrate and wrap up the event in style!
Purchase Garden Party tickets and register to bid [HERE!](#)

View the online catalog [HERE!](#)



HOURS

Clay Business

Monday-Friday, 10 am–5 pm
Saturday, 9 am–5 pm
CLOSED JULY 4-5

Gallery & Visitor Center, Exhibitions & Artist Studios
Tuesday-Friday, 11 am–5 pm
Saturday, 12 pm–4 pm
Closed Sunday and Monday
CLOSED JULY 4-5

Bray Gallery: Downtown
Wed-Fri, 11 am–5 pm
Saturday, 12 pm–4 pm
Closed Sunday-Tuesday
CLOSED JULY 4-5

DONATE TODAY

THE BRICKYARD NETWORK

A wealth of ceramic conversation and knowledge right at your fingertips! Check out our most recent episodes on your favorite podcast app!



[CLAY IN COLOR](#)



Angelik Vizcarrondo-Laboy and Alex Anderson
talk with young

Upcoming Artist Amplified



Meet our 2025 Bray Residents (Part II) in a fun and informative manner in the form of a lightning round panel discussion moderated by Bray staff. View their artworks via slides while getting to know more about each of them as artists and individuals. Part one of two will introduce Caleb Considine, Avi Farber, Vincent Frimpong, Spencer Cheek, and Tommy Lomeli - discover what their plans are for their time with us as Residents and hear what they're thinking and working on in their studios!

Our Artist Amplified lecture and demonstration series allows artists and art enthusiasts to share their history, process, and conceptual motivations with the public through various presentation formats. We can't wait to discover what our Residents have to share!

Learn more about this event and the entire Artist Amplified Series [HERE](#).

Can't make it in person? Join the livestream of the talk [HERE](#)!

Stay tuned for more Artist Amplified this summer:

August 14: Meet The Bray's 2025 Resident Artists Part 2

professionals of color who use humor, cuteness, and the decorative in their work.

FOR FLUX SAKE



Kathy King, Matt Katz and Rose Katz answer your burning questions about clay and glaze. You'll be laughing and learning about glaze chemistry in no time.

THE KILN SITTERS



Marianne Chénard, Brendan Tang, and Carole Epp bring you enlightening interviews from Canadian makers.

MAKER'S PLAYBOOK



Rebecca Ickes Carra talks with artists about what it's really like to make a living from the things we make.

THE SHOT CALLERS



Each week Virgil Ortiz and Justin Reese will make a signature cocktail with their guests as they talk about their journey

July Experience Clay Classes



Whether you are looking at experience clay for the first time or are seeking a fun-filled creative activity, our Experience Classes offer hands-on learning for a variety of student types, abilities, and interests. Check out our July classes and sign up today to reserve your seat!

Coffee and Clay - Saturday, July 12th, 10 am-Noon

- Develop your wheel-throwing skills and connect with good company, BYO coffee, pastries, and other snacks are welcome!

Dirty Date Night - Wednesday, July 30th, 6-8 pm

- Bring your partner, spouse, or friend to this crash course to create a piece on the wheel!

Bray Clay Throwdown - Thursday, July 31st, 6-8 pm

- Try your hand at the pottery wheel in this energy filled clay class at The Bray. We don't judge the results, but we do expect a good time to be had by all!

Save The Date: Fall Continuing Education Class Registration is Coming Soon!

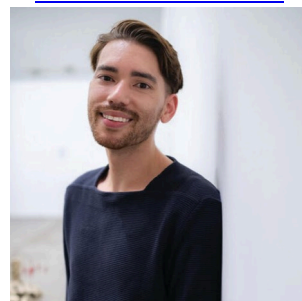
through the world of art.

TALES OF A RED CLAY RAMBLER



Ben Carter talks with potters, sculptors, and ceramic designers about their creative practice.

TRADE SECRET



Adam Chau hosts conversations about contemporary issues in art, craft and design.

BEYOND THE BRICKYARD

Take a deeper look at the history of the Archie Bray Foundation and its influence on the ceramic world. We are taking listener submitted questions for this podcast. If you have a story to tell shoot us an email and be on the show!

(ben@archiebray.org)

SPONSORS

Thanks to these sponsors for making the Brickyard Podcast Network possible. Contact ben@archiebray.org to join our growing list of



Have you heard? Our Adult (16+) Continuing Education classes meet for three hours, once a week, for ten weeks! Join experienced instructors who are eager to share their knowledge around a catered course topic. Students receive daily open studio access outside scheduled classes to practice what they're learning in class. We offer these classes twice a year, and our Fall class registration is almost here! Mark your calendar with these important dates:
Tuesday, July 29th, 10:30 am - Early Member Registration
Tuesday, August 5th, 10:30 am - General Registration
September 15th-November 22nd - Fall class session

Our class line-up is going to be a good one! Check out the options below and stay tuned for more information [on our website](#):
Mondays, 6-9 pm - *Ceramics Form and Space* with Lexus Giles
Tuesdays, 6-9 pm - *Surface Seconds* with Eliza Weber
Wednesdays, 9:30 am-12:30 pm - *Embracing Clay* with Jason Lee Starin
Wednesdays, 6-9 pm - *Give it a Spin; Beginner Wheel* with Marian Draper
Saturdays, 10 am-1 pm - *The Rhythm of Form* with Jake Brodsky

sponsors.

The Rosenfield Collection
Contemporary, Functional Ceramic Art Collection

CERAMIC ARTS
 NETWORK

GR Pottery Forms
 Durable and Economical

CORNELL
 STUDIO SUPPLY

QUICK LINKS

[Bray Homepage](#)

[Events Calendar](#)

[Education](#)

[Podcast Network](#)

[Become a Member](#)

[Donate Now](#)

[Online Sales Gallery](#)

[Clay Business](#)



Bray Clay Business



At [Bray Clay](#), we provide everything a ceramic artist, hobbyist, or classroom could need or want. We produce clay on-site in Helena, Montana for every firing temperature and color and we stock many more clay from Plainsman and Laguna. Everything you need to work with and finish your ceramic pieces—glazes, underglazes, tools, dry materials, and studio equipment—is all available in our Helena store, by phone, or [online](#).

We are thankful for you!

Because of your generous support, we have been able to fuel our mission to promote, celebrate, and sustain the ceramic arts through the residency program, education, gallery, ceramic materials and technology, and community engagement on a local, national, and international scale. In the words of Archie himself, The Bray makes available, “for all who are seriously and sincerely interested in any of the branches of the ceramic arts, a fine place to work”.



Your love of the ceramic arts and our community makes this all possible. You are an important part of our work and our continued success. Please show your support by making a gift today.



The Archie Bray Foundation recognizes and honors the Indigenous peoples of this region on whose ancestral lands the Foundation now stands. Indigenous people have inhabited the valley in which Helena is situated for more than 12,000 years; the valley acting as a crossover for Salish, Crow, Bannock, and Blackfeet tribes among others.

We respectfully acknowledge and honor all Indigenous communities whose land we reside on in what is now known as Montana— past, present, future—and are grateful for their ongoing and vibrant presence. We

believe that acknowledging and reflecting upon the contemporary lived experience and history of the Indigenous peoples here in Montana and around the world are essential steps toward creating a more equitable world. Learn more through the [#HonorNativeLand](#) initiative of the U.S. Department of Arts and Culture, and consider contributing to Indigenous-led organizations doing important work to further the health and wellness, sovereignty and self-determination of the first peoples of this land.

The Bray is a nonprofit educational organization dedicated to the enrichment of the ceramic arts, located at 2915 Country Club Ave. in Helena, just 1/3 mile west of Spring Meadow Lake.

This project is supported by the National Endowment for the Arts, and in part by the Montana Cultural Trust, the Montana Arts Council, the Bray Business Alliance and the friends and members of the Bray. The Bray is funded in part by coal severance taxes paid based upon coal mined in Montana and deposited in Montana's Cultural and Aesthetic Projects Trust Fund.

The Bray | 2915 Country Club Ave, Helena, MT 59602 | 406/443-3502 | www.archiebray.org