

*online*  
**Benefit Auction**  
July 24<sup>th</sup> - 30<sup>th</sup>





# *Welcome to the* **2021 Bray Benefit Auction!**

**Bidding on all lots will begin on Saturday, July 24th at 10am (MDT).**

**The Heritage Auction lots will close on Thursday, July 29th at 7 p.m. (MDT).  
The Premiere Auction lots will close on Thursday, July 29th at 7:15 p.m. (MDT).**

**The General Auction lots will close on Friday, July 30th at 7 p.m. (MDT).  
The Cup Auction will close on Friday, July 30th at 7:15 p.m. (MDT).  
The Experience Auction lots will close on Friday, July 30th at 7:30 p.m. (MDT).**

For information about the auction items and delivery, questions,  
or assistance with registering or placing bids, please contact  
[bid@archiebray.org](mailto:bid@archiebray.org) or call (406)443-3502 ext 117.

**Register, Bid and Donate Here: [www.givergy.us/archiebrayfoundation](http://www.givergy.us/archiebrayfoundation)**

---

## **How To Bid and Donate:**

1. Use the top-left menu to view the Heritage Auction Items, Premiere Auction Items, General Auction Items, Cup Auction Items or Experience Auction items. Also use the left hand menu bar to access My Bids or Make a Donation.
2. To bid, select an item, enter your amount and then click 'Place Bid'. Use the 'Max Bid' function and the system will bid for you up to the amount entered. The Premiere Auction is a sealed bidding system in which you can see the number of bids an item has, but not the other values of the bids. Each Premiere Auction lot will display it's individual closing time.
3. Register your details and then 'Confirm Your Bid'.
4. Receive outbid text notifications and bid again!

---

## **Shipping**

Shipping is not included in the buy price of the auction lots. You will be contacted with additional shipping expenses 1-2 weeks after the close of the auction. We do our best to keep these expenses as minimal as possible. Local pick up is also available. Thank you for your understanding.

If you have any questions please refer to the FAQs section  
or contact us at [bid@archiebray.org](mailto:bid@archiebray.org) or 406.443.3502 ext 117

# Call for Cash

The Bray Auction is a vital fundraising event needed to support our mission to promote, celebrate, and sustain the ceramic arts.

All Call for Cash proceeds benefit The Bray's artistic, educational, and community engagement programs. Our ongoing goal is to create opportunities for underrepresented communities and remove barriers to participate in Bray programs at every level.

*"Thanks to the Archie Bray Foundation for giving me space and growing their interest in black makers and makers of color, all over the world."*

-Theaster Gates,  
Visiting Artist, 2021

## Your tax-deductible donation will:

Support partnership with social practice installation artist Theaster Gates and his founding company, Dorchester Industries, with the aim to create opportunities for makers of color to connect at The Bray

Fund the development of new outreach programs aimed at diversifying and broadening our audience

Remove barriers for underserved populations

Provide funding for BIPOC artists/students

Re-imagine current educational models to address systemic imbalances

Thank you to Quinn Delany and Wayne Jordan for their generous support in providing a matching gift to support Bray programming with Theaster Gates focused on creating opportunities specifically for People of Color and makers from underrepresented communities.

Donations up to 25,000 will be matched dollar for dollar.

# Live Event

**When: Thursday, July 29th at 6pm (MDT)**

## Description:

Archie Bray's Resident Artist Director, Steven Young Lee, will be joined by Board Chair, Sue Tirrell, and other special guests. Join to see highlights from the Heritage and Premiere Auctions, get an exclusive preview of the Bray's new logo, receive updates on happenings around campus from facility improvements to developments in our programming, and more!

Once registered, you will receive a Zoom invitation via email for participation.

[Register by clicking here](#)

**Thank you to our generous auction sponsors for their support!**





### **How do I make a bid?**

For the Premiere Auction items, the bids are submitted as a sealed bid. You will be able to see the number of bids placed on an item but not the values of the other bids. Each Premiere Auction lot will display it's individual closing time. For the other Auctions, scroll through the list and tap on the item you want to bid on. At the bottom of the page beneath the photo and description it will show you the current winning bid and the next minimum bid you need to make. Enter your bid amount into the field at the bottom of the page and click Place Bid (if you are not registered you will need to register your details). Credit card information is required before placing your first bid.

### **How do I make a donation?**

Click on Call for Cash, choose your level, or enter any amount with option #11, and click Donate Now. As with bidding you will need to be registered on the system.

### **How do I register?**

You can register when you first place a bid or make donation, or you can click on Login/Register. You will be asked to enter your details so we can contact you if you win an auction item.

### **Can I edit my profile?**

Yes, you can change any of your contact details at any point. Click on My Account, edit your profile and click Save.

### **How do I know if I have been outbid?**

You can click on My Account and then My Bids to see all of the items you are currently winning or have been outbid on. You will also be sent a text and email notification if you have been outbid.

### **What do I do if I want to retract a bid?**

Contact the Bray at [bid@archiebray.org](mailto:bid@archiebray.org) or call 406.443.3502 ext. 117

### **When does the auction close?**

On Thursday, July 29th The Heritage Auction lots will close on at 7 p.m. (MDT), And The Premiere at 7:15 p.m. (MDT).

On Friday, July 30th The General Auction lots will close at 7 p.m. (MDT), The Cup Auction at 7:15 p.m. (MDT), And The Experience Auction at 7:30 p.m. (MDT).

### **How do I know if I won an item?**

When the system closes, your credit card will automatically be charged only if you have won an item and/or made a donation. You will then be sent a text and email notification with a confirmation of your payment. For item collection information please refer to the home page of this website.

**For questions about auction items or making a donation, please contact [bid@archiebray.org](mailto:bid@archiebray.org) or by calling 406.443.3502 ext 117.**

1 Alessandro Gallo

*Swing*, 2011

clay, mixed media

17" x 16.5" x 15"

Retail Value \$3000











## 2 Alex Anderson

*Nightmare Vessel 4, 2021*

stoneware, glaze, gold luster, 11" x 7" x 7"

Retail Value \$9000



### 3 Andrea Gill

*Stretching Tall*, 2020

earthenware, engobes, glaze

22" x 15" x 8"

Retail Value \$4800

full donation











## 4 Anna Hepler

*Crawlspace*, 2019

drypoint print on Hannemule Copperplate paper

edition of 5, 23" x 21"x 1"

Retail Value \$700

## 5 Anna Hepler

*Crawlspace*, 2018, ceramic, slip, paint

14" x 13" x 5"

Retail Value \$1200











## 6 Chase Travaille

*Bray Shard Amphora #3*, 2021  
shards found behind the Bray  
Warehouse Gallery, Bray Poxey  
18.5" x 6.5" x 8.5"  
Retail Value \$5000







## 7 Del Harrow

*Surface 12, 2021*

stoneware, 14.5" x 11" x 11"

Retail Value \$3800

full donation





## 8 Heesoo Lee

*In Dreams*, 2021, porcelain, 9" x 22" x 12

Retail Value \$3200











## 9 Kelsie Rudolph

*Mirror, 2020*

ceramic, glaze, 21" x 21" x 2.25"

Retail Value \$1800



## 10 Kurt Weiser

mid 80's, ceramic, glaze

15" x 11" x 7"

full donation













## 11 Patti Warashina

*Bird Covered Jar'19-C, 2019,*  
lowfire clay, underglaze, glaze

9" x 12.5" x 4"

Retail Value \$1900

full donation



## 12 Raven Halfmoon

*Cah'Shuh (Blackbird #2), 2021*

stoneware, glaze, 9" x 6" x 5"

Retail Value \$4000

full donation













## 13 Sergei Isupov

*Embrace*, 2020, paper, charcoal, 26" x 20"

Retail Value \$1800

full donation

## 14 Sunkoo Yuh

*Come Together*, 2017  
screenprint, edition 1/6  
15" x 22.25"  
Retail Value \$1200  
full donation



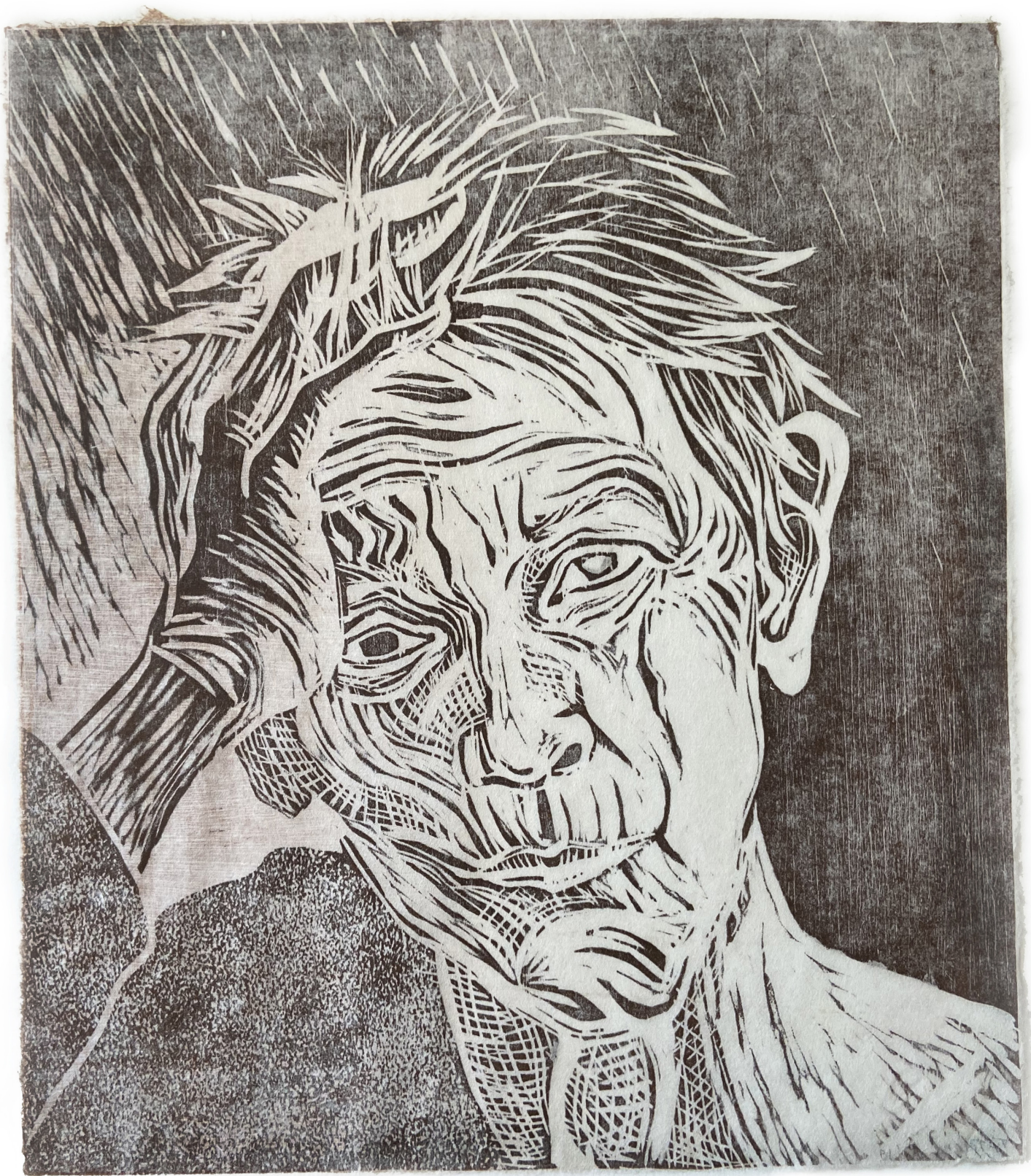




10

Sunkoo Yuh







## 15 Tip Toland

*Self Portrait*, 2013

woodblock and ink on rice paper, 12" x 12"

Retail Value \$700

full donation

## 16 Theaster Gates

*Vessel #6*, stoneware, glaze, bronze plinth

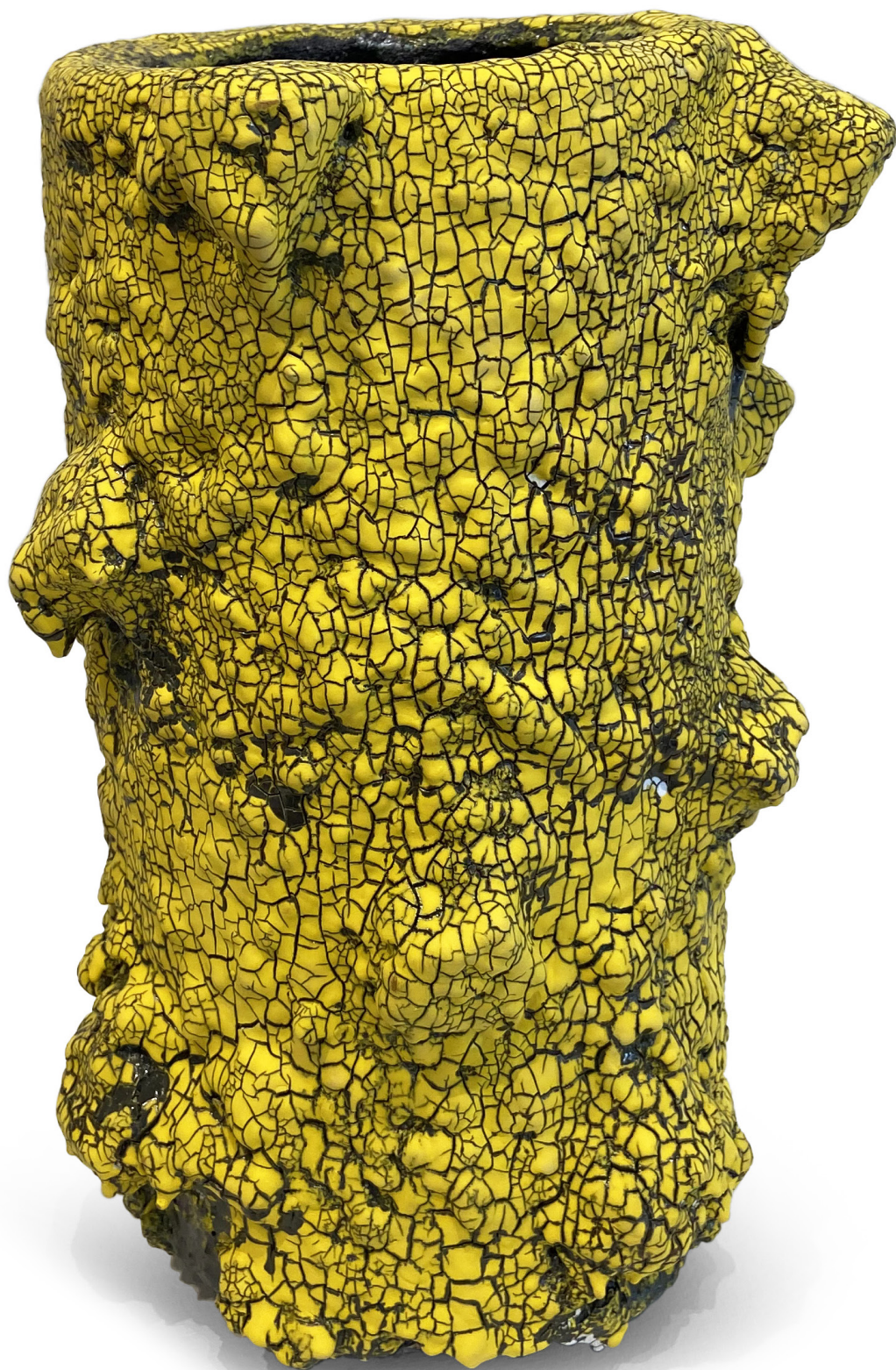
24.75" x 20" x 20"

Retail Value \$175,000

full donation









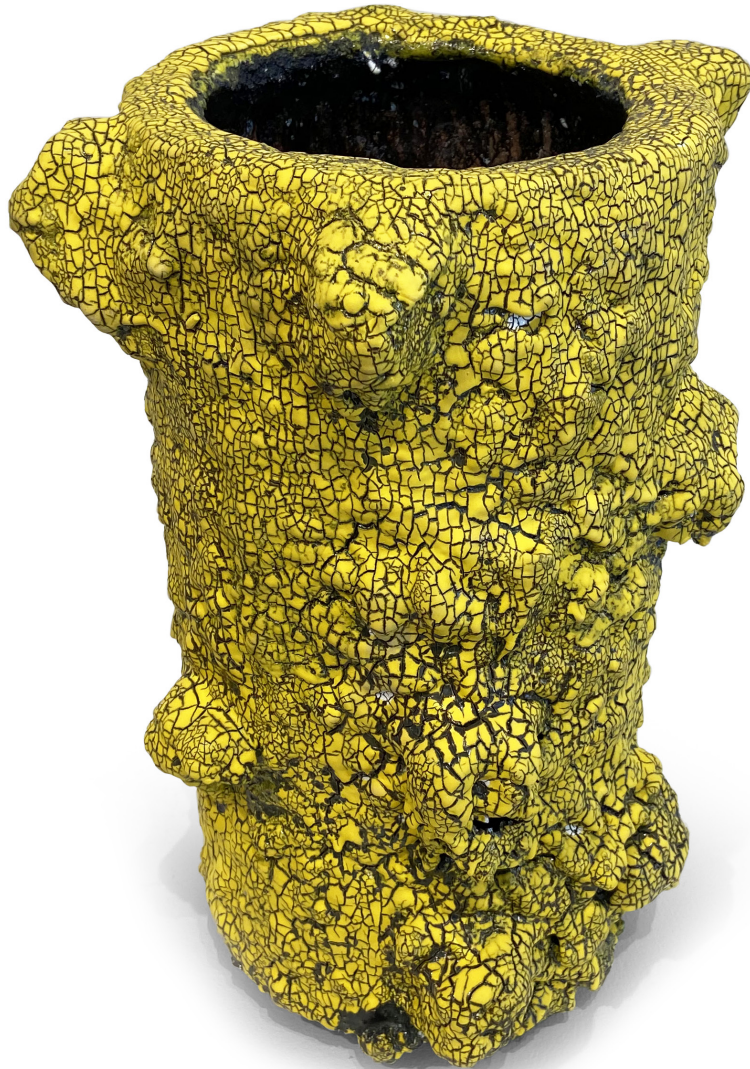
## 17 Tony Marsh

*Crucible*, 2021, clay, glaze

15" x 11" x 11"

Retail Value \$9000

full donation







## 18 Virgil Ortiz

*Kaush - Healer*, 2021, ceramic, glaze

14.5" x 8" x 9.5"

Retail Value \$4800

full donation









## 19 Steven Young Lee & Bryan Burk

*Untitled*, 2021, porcelain, glaze, underglaze

22" x 13" x 13"

Retail Value \$7500

full donation



# 1 Beatrice Wood

*He Could Not Wait*, 1990's, ceramic

14" x 18" x 11"

Value \$32,000



Donated from Private Collection



---

## 2 Toshiko Takaezu

*Closed Form*, 2000

porcelain, 4.5" x 5.25" x 5.25"

made in Hawaii

full donation



Donated from Private Collection

### 3 Betty Woodman

*Platter, c. 1990, earthenware, glaze*

3" x 25.75" x 9.5"

value: \$3600

full donation



Courtesy Woodman Family Foundation / Artists Rights Society (ARS), New York



## 4 Frances Senska

*Heart Teapot*  
stoneware, glaze  
8.5" x 9" x 5"



Courtesy of Relic Gallery

## 5 Frances Senska

*Partridge*, stoneware, glaze

5" x 3.5" x 4"

full donation



Donated from Private Collection



## 6 David Shaner

*Jar, stoneware, glaze*

4" x 4" x 4"

full donation



Donated from Private Collection

## 7 David Shaner

*Jar, stoneware, glaze*

4.5" x 4.5" x 4.5"

full donation



Donated from Private Collection



## 8 David Shaner

*Jar, stoneware, glaze*

6" x 5" x 5"

full donation



Donated from Private Collection

The Archie Bray Foundation recognizes and honors the Indigenous peoples of this region on whose ancestral lands the Foundation now stands. Archaeological evidence shows that Native Americans inhabited the valley in which Helena is situated more than 12,000 years ago. Although never serving as the permanent home of any particular tribe, the valley was a crossover area for Salish, Crow, Bannock, and Blackfeet tribal members.

We also want to recognize that Montana today is a community of many diverse Native peoples who continue to live and work here. We respectfully acknowledge and honor all Indigenous communities— past, present, future—and are grateful for their ongoing and vibrant presence.

