

FALL 2025

THE BRAY NEWS FROM THE BRICKYARD

A PUBLICATION OF THE ARCHIE BRAY FOUNDATION FOR THE CERAMIC ARTS

EDUCATION FELLOWS

page 4

'25 RESIDENT COHORT

page 6

TILE FACTORY STABILIZATION

page 8

PERMANENT COLLECTION

page 9

IMPROVEMENTS AND ADDITIONS

page 10

Megan Thomas, *Pair of Heron Jars*, 2024
Permanent Collection



NOTE FROM THE MANAGING DIRECTOR

Greetings all!

You may know that our Executive Director, Rebecca Harvey, has recently stepped down to refocus her energies on her studio practice. We all wish her continued success and look forward to seeing what her increased studio time produces! Following her departure, the Board of Directors appointed me as Managing Director while they begin the work required to find and hire The Bray's next long-term leader. I am both humbled and honored to lead The Bray as we move into our 75th year.

Since I first began working at The Bray in 2011, I have always felt there is sense of magic imbued into its grounds and facilities. Others feel it, too. A couple of weeks ago, I gave a tour to some visitors who were coming to The Bray for the first time. By the end of our tour, they all said, "This place is magic."

I think many will agree that The Bray is a magical place. Its magic comes from the vibrant mix of activities here—from crafting a half million pounds of clay each year for use by artists around the country, to our artist residencies, our galleries and exhibitions, and continuing education classes. All combined, this constellation of quality programming makes The Bray a world-renowned hub of creativity, teaching, and learning. The collective artistic energy of our residents, students, and staff, all building upon the good work of those who came before us, is what creates this unique and powerful imprint on the grounds and facilities.

Since 1951, The Bray has focused on supporting the creative work that has been done by hundreds of artists, residents, and those who participate in our educational offerings. Building on the original vision of Archie Bray Sr., and then having those boundaries pushed by world-class ceramic artists over the years, The Bray has served as a melting pot for ceramicists from around the world—and we plan to do so long into the future.

In this, our first print newsletter in several years, you will see how your support drives the work that goes on at The Bray day after day. If you haven't been to The Bray recently, please come. We would love to welcome you back!

Brad Robinson
Managing Director

brad.robinson@archiebray.org
(406) 443-3502 ext. 110



Top Row: Brad Robinson, Perry Haas, Trey Behling, Stephanie Seguin, Chelsea Lipscomb, Liz Harrison, David Peters, Cole Collier, Josh Reeder, Perry Burlingame, Lindsey Pankratz, Anvil Williamson, Todd Pentico, Chuck Aydtlett, Zac Nickman, Ayla Murray
Bottom Row: Allison Rowland, Kathleen Schulz, Avery Mickey, Lisa Myaya, Jordan Thornton, Kai Lemis, Bill Wilkey, Anne-hee O'Connor

YOUR SUPPORT MAKES A DIFFERENCE!

For nearly 75 years, artists from Montana, the United States, and all over the globe have come to The Bray to learn, grow, and experience community with other ceramic artists. Many have gone on to become leaders in the field. This is only possible with the support of hundreds of donors like you who believe that art is important, that creating a space for artists is a valuable part of society, and that art inspires and helps create a more beautiful world.

Your support signals that you believe in the power of art, in the rich legacy of ceramics in Montana, and in the hope that the next generation of artists have the resources necessary to create work that is meaningful and inspiring.

Please make a gift today by using the enclosed envelope or online at archiebray.com/donate.

DONATIONS OF APPRECIATED SECURITY = POTENTIAL TAX SAVINGS FOR YOU! Your stocks, bonds or mutual funds can be donated to the Archie Bray Foundation. A donation of this nature can help you avoid capital gains taxes while receiving an income tax deduction. Your gift can be transferred to our account at D.A. Davidson, DTCC Clearing #0361, receiving firm account #14001142. Talk to your broker for more details.

STAFF

BRAD ROBINSON, Managing Director

CHUCK AYDLETT, Clay Business/Collections

TREY BEHLING, Graphic Designer

PERRY BURLINGAME, Gallery & Exhibitions Coordinator

COLE COLLIER, Clay Business Online Manager

SHANLEE COX, Grants Coordinator

PERRY HAAS, Facilities & Studio Manager

LIZ HARRISON, Development Director

TED HUGHES, Collections Specialist

CHRIS LEIPZIG, Clay Business Assistant Manager

KAI LEMIS, Clay Production & Warehouse Assistant

CHELSEA LIPSCOMB, Gallery Sales Assistant

AVERY MICKEY, Gallery & Events Coordinator

AYLA MURRAY, Collections Assistant

LISA MYAYA, Finance Associate

ZAC NICKMAN, Facilities & Studio Coordinator

ANNE-HEE O'CONNOR, Clay Production & Warehouse Asst.

LINDSEY PANKRATZ, Education Coordinator

TODD PENTICO, Clay Business Retail Manager

DAVID PETERS, Clay Business Director

JOSH REEDER, Clay Production Assistant

ALLISON ROWLAND, Administrative Coordinator

KATHLEEN SCHULZ, Marketing & Development Coordinator

STEPHANIE SEGUIN, Education Manager

JORDAN THORNTON, Gallery Manager

BILL WILKEY, Maintenance Specialist & Clay Mixing Staff

ANVIL WILLIAMSON, Classroom & Studio Facilitator

BOARD

Joan Anderson

Wayne Boeck

Kimberly Feig

Sam Harvey

Giselle Hicks

Garth Jacobson

Chere Jiusto

Randi O'Brien

Brooks Oliver

Louise Rosenfield

Lisa Simon

Kirsten Smith

Sue Tirrell

Jared Tso

Ferren Warner

Scott Wessel

Trey Behling
Graphic Design
Liz Harrison
Editor

MID-YEAR SNAPSHOT EDUCATION & ENGAGEMENT

If you or your business are interested in sponsoring an educational program or event, please email our Development Director, Liz Harrison at liz.harrison@archiebray.org

The Frances Senska Center for Education and Engagement serves as a gathering place for a vibrant community of curious minds of all abilities and backgrounds. So far this year we've served over 800 participants through 8 educational programs. It is an honor and privilege to connect so many people to the ceramic arts through transformative educational experiences.

21 individuals participated through our innovative Incubator Program

127 students learned new techniques in our Continuing Education Program

93 participants took 11 guided tours of our historic grounds

207 students were served through our Engagement Program

159 audience members showed up to support 13 talented artists in our Artist Amplified series

176 students were served over 32 of our one-time Experience Classes

2025 EDUCATION FELLOWS

ANNE-HEE O'CONNOR
Allentown, PA
2025 AMACO Fellow



KAI LEMIS
Simsbury, CT
2025 Geaney Fellow

LIANA LOVELESS
Grozni, Russia
2025 Quigley-Hiltner Fellow



The Bray's Educational Fellowship Program is designed to facilitate hands-on learning while providing space and time for emerging ceramic professionals to investigate their career goals and further their artistic practice.



Jake Brodsky gives a demo to the Manchester Craftsmen's Guild 2025 participants.



Anne-Hee O'Connor

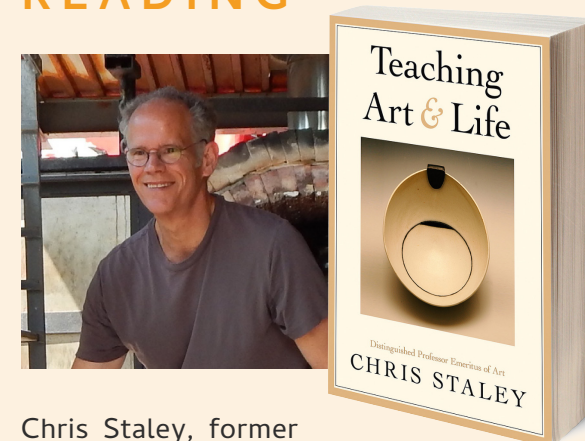


Kai Lemis



Liana Loveless

WHAT WE'RE READING



Chris Staley, former Bray Resident Artist and Visiting Artist, has had a successful career both as a ceramic artist and an educator, currently serving as a Distinguished Professor Emeritus of Art at Penn State. He's also had an impressive teaching career at Rhode Island School of Design and Wichita State University. His work has been extensively exhibited and is included in some of the world's most prominent collections, including the Metropolitan Museum of Art, The Smithsonian, and the Victoria and Albert Museum in London.

Recently, Staley published *Teaching Art and Life*, a heartfelt book which outlines his theories about teaching, ceramics, and the delicate interplay between student and teacher. Divided into 40 short essays about different topics, Staley thoughtfully considers such themes as the role of criticism in class, the importance of building community, and the benefits and dangers of competition.

Perhaps it's best to let Staley tell you himself: *"The essence of making pots for me is about being human. It's about fragility and strength. It's about the intimate moment when the handle of a cup touches the hand. It is a notable experience to use pots that exude the soul of the maker. All of our senses are engaged in this experience. Very few things can be touched and leave one a different person. It is the paradox of who is touching whom that gives pots their greatest potential."*

Teaching Art & Life is available at your local bookstore or online at fliplearning.com.

2025-26 RESIDENT ARTISTS

JAKE BRODSKY
Helena, MT
2025 Lincoln Fellow



SPENCER CHEEK*
Boston, MA
2025 Bray Board Fellow

* INDICATES SUMMER
RESIDENCY PROGRAM

CALEB CONSIDINE*
Orlando, FL
2025 Rosenfield Fellow



RACHEL DONNER*
Santa Fe, NM
2025 Sage Fellow

MARIAN DRAPER
Rome, NY
2025 Bray Board Fellow



AVI FARBER*
Arroyo Seco, NM
2025 Hicks Fellow

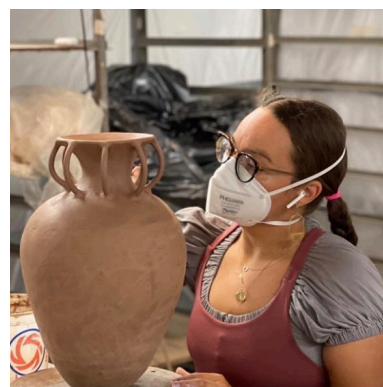


VINCENT FRIMPONG*
Talladega, AL
2025 AMACO Fellow



DANTE GAMBARDELLA
Bozeman, MT
2025 Etchart-Satre Fellow

LEXUS GILES
Jackson, MS
2025 Simone Leigh Fellow



JEANINE HILL*
Durham, NC
2025 Senska Fellow

JASON LEE STARIN
Grand Rapids, MI
2025 Quigley-Hiltner Fellow



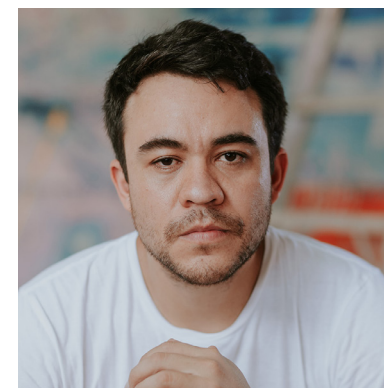
TOMMY LOMELI
Lodi, CA
2025 Taunt Fellow



CAREY NATHANSON
Wilmington, NC
2025 Lilian Fellow



SAMUEL SARMIENTO
Maracaibo, Venezuela
2025 Frazza Fellow

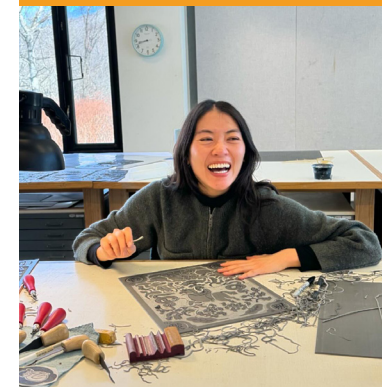


KIM TUCKER
California
2025 Bray Fellow



ELIZA WEBER
Great Falls, MT
2025 Speyer Fellow

EMILY B. YANG*
Brooklyn, NY
2025 Bray Board Fellow



Spencer Cheek
Riding High Knight, 2025
\$250

VISITING ARTISTS

Stephen Burks
Malika Leiper
Allie Stack
Gillan Doty
Chris Staley
Linda Tien
Ellen Kleckner
Cheri Owen
Mark Harris
Carmel Buckley
Nancy Mintz
Kim Dickey

VISITING CRITICAL WRITER FOR ARTISTS

Jenni Sorkin

*Our thanks to all of the generous donors
who made gifts to The Bray's Fellowship
program!*

DID YOU KNOW WE OFFER SELF-GUIDED AND GROUP TOURS OF THE BRAY?

Self-guided tour maps are available at the Bray Gallery & Visitor Center. Feel free to explore the grounds anytime during daylight hours. Group tours can be arranged by appointment through the Education and Engagement program. Call (406) 443-3502 ext. 113 or visit archiebray.org



Ayla Murray leads a tour of the Permanent Collection.

THE BRAY'S PERMANENT COLLECTION

Every resident artist at the Archie Bray Foundation is asked to leave one piece for The Bray's Permanent Collection. With The Bray's 75th anniversary coming next year, you can only imagine the wealth of treasures contained in this collection, including works by legendary artists such as Bernard Leach, Shoji Hamada, Peter Voulkos, Rudy Autio, Ken Ferguson, David Shaner, and Frances Senska. These pieces tell the story of how time spent at The Bray helped these artists create stunning, world-class art.

While none of the works are available for sale, each piece represents a chapter in The Bray's history and in the field of ceramics. The Permanent Collection currently holds over 1,400 pieces and is projected to reach 1,700 by the end of the year. This ever-expanding collection includes work by past resident artists as well as historical pieces, all of which will soon be available for visitors to view both at The Bray and online. If you are interested in helping support the Permanent Collection, please email our Development Director, Liz Harrison at liz.harrison@archiebray.org.

Sculpture by Nicholas Bonner, *Light Cistern*, 1992
Constructed from small wooden pallets once used to stack sewer tile and brick in the old factory.

Kensuke Yamada, *Seated Woman*, 2008
Permanent Collection

Photo by Garrett Thompson, Floating Leaf Studios



A view inside the historic tile factory built for Western Clay Manufacturing in the late 1800s. With support from a grant from the Montana State Historic Preservation Office and the National Trust for Historic Preservation, work has begun to stabilize and restore the historic building with collaboration from the Preserve Montana Trade Corps.



Gwendolyn Yoppolo, *Basket*, 2008
Permanent Collection

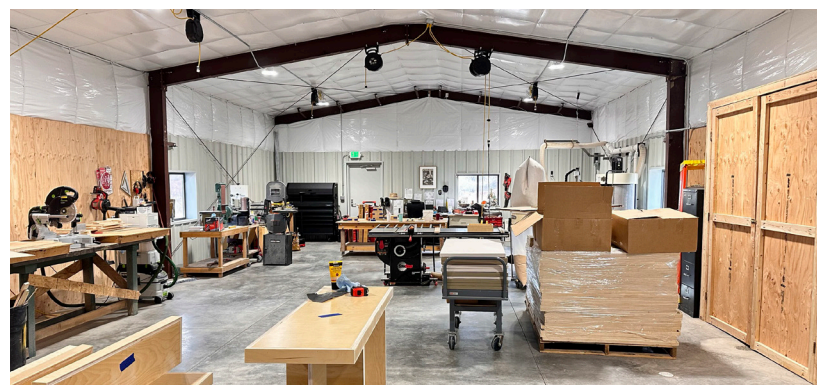
SAVE THE DATE

IMPROVEMENTS & ADDITIONS BRAY CLAY & FACILITIES

Earlier this year, the Clay Business unveiled its refurbished PR-9 Pugmill, advancing production efficiency through the separation of light and dark clay lines. This improvement streamlines operations, reduces waste, and minimizes cross-contamination. The acquisition was made possible through support from the Reinhardt H. & Shirley R. Jahn Foundation Trust and The Treacy Foundation.

The Bray's new 1,950-square-foot Wood and Metal Shop that broke ground last March, has also become an essential campus resource. Designed for flexibility and safety, it features reconfigurable equipment and a clean, clay-free environment near the wood kilns—supporting the evolving needs of The Bray's artists and programs.

Bill Wilkey demos at The Bray Clay Customer Appreciation BBQ.



SHOP ONLINE

Shop clay, glazes, and tools online at archiebrayclay.com

CLAY BUSINESS

Mon - Fri | 10 am - 5 pm
Saturday | 9 am - 5 pm
Closed Sunday
(406) 442-2521

UPCOMING EXHIBITIONS

HEREAFTER: 2025 BRAY EDUCATIONAL FELLOWS

This exhibition showcases works that embody the resonant impact of learning, experimentation, and personal evolution cultivated over a period of rigorous making and mentorship. On display in The Pottery Gallery from **November 6 – December 18, 2025.**



Emily B. Yang
June 7 Bell, 2025
\$1,500



Eliza Weber
Purple Paper Flower Bouquet, 2024
\$150



HOLIDAY SHOW

NOVEMBER 13, 6-8 PM

The Bray Gallery & Visitor Center, Holiday Show

IN THE GALLERY

Explore new works by recent residents Laura Dirksen, Emily B. Yang, Rachel Donner, Spencer Cheek, and Avi Farber, along with past residents Andrew Gilliatt, Kelly Rathbone Rebo, Holly Walker, Uriel Caspi, Simon Levin, and Susan Beiner.

Andrew Gilliatt
Wood Fired Urn Vase
\$200



Andrew Gilliatt
Wood Fired Moon Jar
\$250



BRAY GALLERY & VISITOR CENTER

2915 Country Club Avenue
Helena, MT 59602
Tuesday - Friday | 11 am - 5 pm
Saturday | Noon - 4 pm
Closed Sunday & Monday
(406) 443-3502 ext. 118



SHOP ONLINE

Can't attend? Visit our online gallery at archiebraygallery.org



The Bray

2915 Country Club Avenue, Helena, MT 59602

(406) 443-3502 | archiebray.org

Non-Profit Org.
US Postage
PAID
Helena, MT
59602
Permit #44



Listed on the National Register of Historic Places, The Bray is located three miles from downtown Helena, Montana, on the site of the former Western Clay Manufacturing Company. The 26-acre campus is internationally recognized as a gathering place for emerging and established ceramic artists. The nearby mountains and historic brick factory provide a backdrop for the creative environment. More important is the dynamic community created by the resident artists that continue to come to The Bray to work, share experiences, and explore new ideas. We'd love to hear from you!

Joon Hee Kim, *You're So Good II*, 2022
Permanent Collection



Platinum
Transparency
2025

Candid.

 @archie_bray
 ArchieBrayFoundation
 archiebray.org

The Bray is a 501(c)(3) nonprofit organization.
All donations are tax deductible as allowed by law.



COMING UP SOON... OUR 75TH ANNIVERSARY!